

# Your WEST MIDLANDS WEDDING

yourwestmidlands.wedding

## Trend REPORT

Best-dressed guests

## WIN

A honeymoon  
in Oman

## IN AN ENGLISH COUNTRY GARDEN

Venues with  
al fresco appeal

## LOCAL LOVE

- ♥ Real weddings
- ♥ Styled shoots

# Fun and frivolous

The prettiest playful gowns

£3.55

APR/MAY 2020



HONEYMOONS, BEAUTY, GROOMS, FREEBIES, FASHION AND MUCH MORE...





# MONOCHROME Romance

A black and white colour palette set the tone for this styled shoot

*Images courtesy of Dave Perry Photography*

Martina Paul of Wonderful Events by Martina Paul is a wedding planner and coordinator based in Warwickshire offering various wedding planning services across the Cotswolds and West Midlands. For this inspired shoot, Martina chose Ashton Lodge Country House. "The idea behind the shoot was to bring local suppliers together and create a modern, but still rustic look for the brides who love a stylish wedding. The black and white theme first stemmed from stunning Denby plates; I thought to replicate this look shouldn't be too difficult as lots of kitchens and chefs use modern crockery. This was then followed by florist Hannah, from Green and Wild, who wanted the flowers to be very much on point with 2020 trends. We still wished for our bride and groom to be very classy, so we have opted for a bridal gown with a big skirt and a classic tuxedo for the groom.

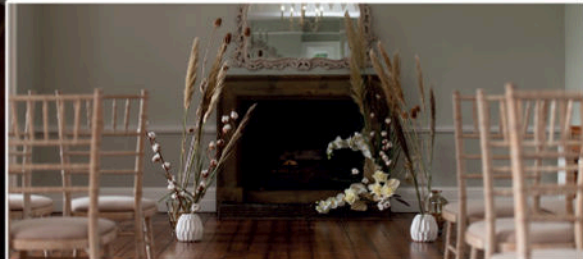
"I hope we have shown this lovely venue in a different light and it will inspire couples to be more adventurous with their themes and décor in the future."





### HAIR, MAKE-UP, ACCESSORIES

Jess and her mum always deliver the look a bride wants; our model had two looks, loose and down without the veil and then a small up do. The length of her hair also complemented the big skirt of the dress; the make-up was a bit darker and heavier to work with the black colours of the shoot.



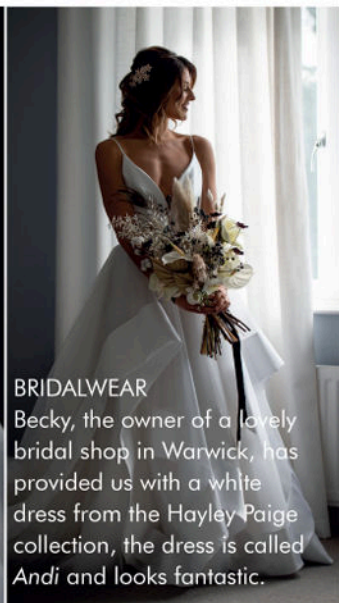
### VENUE

The new owners of Ashton Lodge Country House have fully refurbished this exclusive-hire venue. Its private location is set in three acres of grounds overlooking the Warwickshire countryside and boasts 14 bedrooms, stunning Edwardian ceremony room, a marquee that holds up to 150 guests, and a new bridal suite! The catering is equally delicious, prepared by the Chopping Block.



### CAKE

Allison and I designed the wedding cake to go with our colour scheme. It was a three-tier cake, each tier is a little bit taller than they would usually be to make the cake look more elegant. Hannah, the florist, then used white orchid flowers to decorate; however, Allison can make flowers out of sugar too.



### BRIDALWEAR

Becky, the owner of a lovely bridal shop in Warwick, has provided us with a white dress from the Hayley Paige collection, the dress is called *Andi* and looks fantastic.



### FLOWERS

The flowers were modern and minimalistic including dried flowers, grasses and feathers. Hannah is a local supplier and owns a little flower shop in the heart of Warwick, she's incredibly creative and always super helpful – I tend to hire her for all my couples.

The bridal bouquet included ecuadorian roses, anthuriums, bleached ruscus, chocolate cosmos, berries, pampas grass, phaleanopsis orchids and cotton flowers.

The ceremony arrangement used dried thistles, pampas grasses and cotton flowers in vases, with the fireplace arrangement using dried palm leaves, ecuadorian roses, anthuriums, grasses and phaleanopsis orchids.

The buttonhole was a mini orchid with chocolate cosmos, bleached ruscus and grasses.

The table centre was ecuadorian roses, chocolate cosmos, dried palm leaves, cotton flowers, pampas grass, peacock feathers, berries and bleached ruscus, anthuriums and white double anemones.

The individual vases used chocolate cosmos, berries, Ecuadorian roses, white double anemones, anthuriums and grasses.







### PHOTOGRAPHY

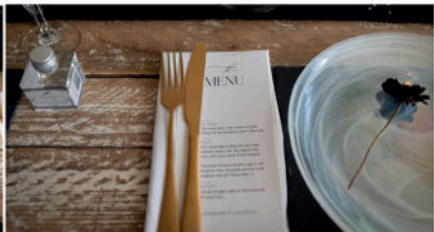
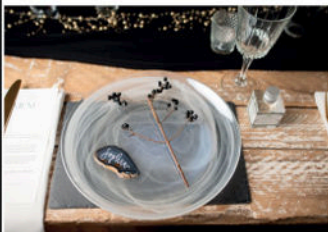
Dave is a local photographer and an easy (funny) person to work with. His style is a bit melodramatic, with full colours and a hint of darkness which worked perfectly well with the theme.



### DÉCOR AND STYLING

Anna is incredibly enthusiastic about everything décor, based in Stratford upon Avon she sourced everything from the cutlery and crockery, to creating the bar and sweets tables, and three dining tablescapes.

The table was the venue's rustic oak table with a whitewash paint, black silk runner, crystal glassware and gold cutlery. These tables are used by this venue, but you can opt for a traditional round table too, and we adorned with show plates, stunning black and white Denby plates, old LPs for a music-themed table, and white glass plates for the last look with berries to contrast the white.



### STATIONERY

### LOCAL INSPIRATION

Lynda is an incredibly talented graphic designer who joined us for the day. From the wedding invitations with black wax seal, rsvps with information cards, handwritten sliced agate stone place names, to a fantastic acrylic sign table number and large acrylic sign with a lovely note "the most beautiful part is, I wasn't even looking when I found you" – this lady always delivers perfection!




### SUITS

You can't go wrong with a classic tux and there was no doubt in my mind that our male model would look great. I borrowed it from Richard Paul's menswear, a lovely show room in Stratford upon Avon that has been providing groom's and groomsmen's suits for more than 30 years! Mark, the owner, was super helpful and I loved working with them.




### LOCAL SUPPLIERS IN THIS SHOOT

**Venue**, Ashton Lodge Country House, [ashtonlodgecountryhouse.com](http://ashtonlodgecountryhouse.com) | **Photographer**, Dave Perry Photography, [daveperryphotography.co.uk](http://daveperryphotography.co.uk) | **Dresses**, Lavelle Bridal Couture, [lavellebridalcouture.co.uk](http://lavellebridalcouture.co.uk) | **Hair and make-up, hair accessories**: Mode Bride Hair and Make-up, [modeweddings.co.uk](http://modeweddings.co.uk) | **Suits**, Richard Paul Menswear, [richardpaulmenswear.co.uk](http://richardpaulmenswear.co.uk) | **Cake**, Spin Spin Sugar Cakes, [spinpinsugar.co.uk](http://spinpinsugar.co.uk) | **Flowers**, Green and Wild, [greenandwildflower.com](http://greenandwildflower.com) | **Stationery**, Lynda Loves, [lyndaloves.com](http://lyndaloves.com) | **Décor and styling**, Pastiche Events, [pasticheevents.co.uk](http://pasticheevents.co.uk) | **Black & white alcohol**, RK Vodka, [rkvodka.co.uk](http://rkvodka.co.uk) | **Favours**, Shakespeare Gin [shakespearedistillery.co.uk](http://shakespearedistillery.co.uk) | **Models**, @gemmafrotmaston @stewilkss